

WHO WE ARE

The early years are so important for shaping children's future. At the Duckling Nursery we are committed to give your child the best possible start. Each individual we care for is unique and constantly learning. So, we provide rich environments, specially tailored activities based on their interests and nurturing relationships to enable them to thrive. We are also here to support you as parents, and this includes giving you all the information you need about fees and funding so that you can make the best childcare choices for your family.

CONTACT US

If you have any questions about the funding or would like to discuss your options further, we are here to help.

The Duckling Nursery,
Writtle Infant School,
Lodge Road,
CM1 3HZ

enquiries@ducklingnursery.co.uk

07771645270

ducklingnursery.co.uk



The Duckling Nursery



Funding and Fees explained

TABLE OF CONTENTS

Childcare Support	1
15 Hours Childcare for 3 and 4 year olds	1
15 & 30 Hours Childcare for Working Families	2
15 Hours Childcare for 2 year olds.....	3
The Duckling Difference	4
Help with payments.....	5
Tax free Childcare	5
Tax credits for childcare.....	5
Universal Credit Childcare	5
Who we are	6
Contact details.....	6



HELP WITH PAYMENTS

Tax free childcare



- For working families, including the self-employed
- Earning under £100k and an average of £183 per week each over three months
- Who aren't receiving Tax Credits, Universal Credit or childcare vouchers
- For every £8 you pay into an online account, the government will add an extra £2, up to £2,000 per child per year

Tax Credits for Childcare



- For working families, in the UK
- 70% of childcare costs, up to a cap
- If you cannot make a new claim for Tax Credits, you may be able to apply for Universal Credit instead

Universal Credit Childcare

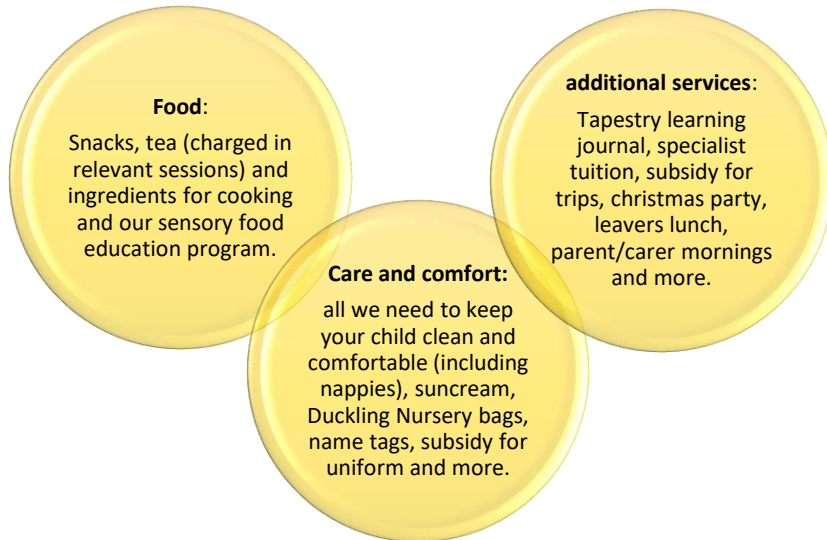


- For working families claiming Universal Credit
- Up to 85% of eligible childcare costs
- Who aren't receiving Tax-Free Childcare

For information about how to apply, further funding or help while you study, visit [childcarechoices.gov.uk](https://www.childcarechoices.gov.uk)

THE DUCKLING DIFFERENCE

We do all we can to provide your child with the best start possible at the Duckling Nursery. The government funding is intended to cover the cost to deliver 15 or 30 hours per week of funded high quality, flexible childcare. It is not intended to cover the cost of food, consumables, additional hours, or additional services. We ask for a small contribution per funded session to cover the following:



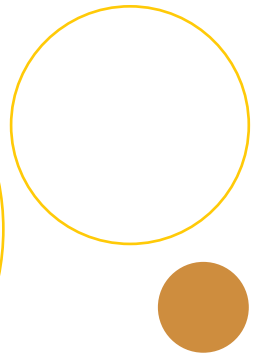
Paying for consumables is not a condition of you taking up the offer of funded hours. If needed, please speak to us and we can devise an alternative personalised agreement to suit your needs which could include providing own snacks, suncream etc. We ensure that all children receive the same high-quality care and education, whatever their circumstances. As we assess the impact of the new 2 year old funding, we won't be charging the Duckling Difference for 1 and 2 year olds.

CHILDCARE SUPPORT

At the duckling nursery, we offer government funded hours to support every child to have the opportunity to access affordable, quality childcare. You will be able to access either 15 or 30 funded hours each week. We offer additional non-funded hours for those who need it.

15 Hours Childcare for 3 & 4 year olds

- 15 hours of childcare is available for **all** families in England
- Provided for 38 weeks (up to 570 hours per year), that you can use flexibly with one or more providers
- It can be claimed from 1 January, 1 April or 1 September following your child's 3rd birthday
- This funding isn't intended to cover consumables so there is a charge for these per session (see p. 4)



CHILDCARE SUPPORT

15 & 30 Hours Childcare for Working Families

- Up to 15 hours of early education over 38 weeks of the year for 2 year olds.
- Up to 30 hours of early education over 38 weeks of the year for 3-4 year olds.
- Can be used flexibly with one or more childcare providers.
- This funding isn't intended to cover consumables so there is a charge for these per session (see p. 4)

Am I eligible?

- You, and any partner, must each expect to earn (on average) at least £183 per week.
- If you, or your partner, are on maternity, paternity or adoption leave, or you're unable to work because you are disabled or have caring responsibilities, you could still be eligible.
- You **can't** get either 15 or 30 hours childcare if you, or your partner, each **individually** expect to earn £100,000 adjusted net income or more.
- Eligible working families can get up to 30 hours childcare. This cannot be used in addition to the 15 hours available for all 3 and 4 year olds.

When can my child start?

- Your child can start in their childcare place the term after they are eligible and have received a valid eligibility code, **whichever is later**. Term start dates are 1st September, 1st January and 1st April.
- To keep your 15 or 30 hours childcare place you need to check your details are up to date every 3 months.

CHILDCARE SUPPORT

15 Hours Childcare for 2 year olds

- For families, receiving some additional forms of government support
- 15 hours of childcare or early education for 38 weeks (up to 570 hours per year), that you can use flexibly with one or more providers.
- To be able to take up 15 hours of early education for your two-year-old you must meet the eligibility criteria. Please visit [GOV.UK](https://www.gov.uk) for further information.

15 Hours Childcare for 9 months to 2 year olds

- From September 2024 you can claim 15 hours over 38 weeks of the year for 9-months to 2 year olds.
- Can be claimed if your child is starting before the term after they turn 2.
- Eligibility is the same as 2 – 4 years childcare for working families (p2)
- Can be used flexibly with one or more childcare providers.
- This funding isn't intended to cover consumables but this year we won't be charging the Duckling Difference for 1 or 2 year olds.



For more information and to apply, please visit childcarechoices.gov.uk